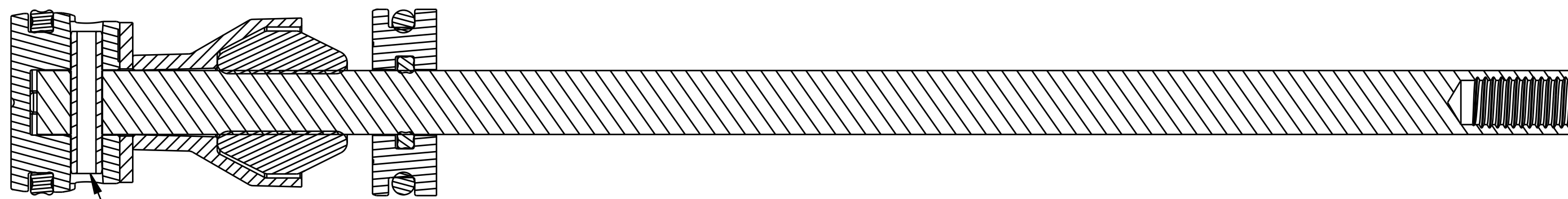


4

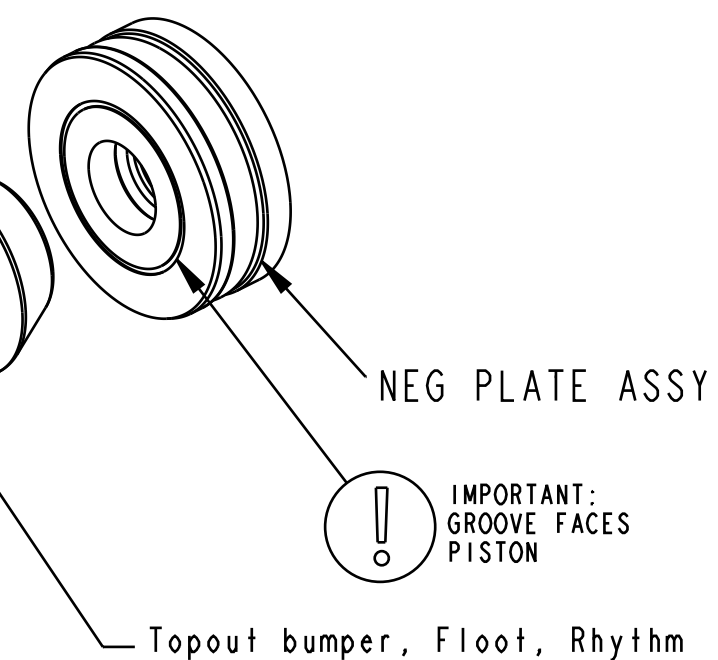
3

2

1



! IMPORTANT:
ORIENT GAP IN PIN TOWARDS
TOPOUT SPACER $\pm 15^\circ$



! IMPORTANT:
GROOVE FACES
PISTON

NEG PLATE ASSY

Topout bumper, Float, Rhythm

Topout spacer, Float, Rhythm

GREASE:
THIN LAYER
OF SLICK HONEY

SHAFT

! IMPORTANT:
VERIFY SEAL IS NOT
TWISTED AFTER INSTALL

Fastener, Standard: Flat Washer [10mm ID X 26 OD]

Pin: Spring [Ø 0.188 X 0.875 TLG] Spring Steel, Zinc

PISTON

SEAL: O-RING

FOX FOX Factory, Inc. Ph 831-768-1100
130 Hangar Way, Watsonville, CA 95076 USA Fax 831-768-9312

TITLE
**Air Shaft Assys, 2023,
34 DMAS E-Opt, 1.110 Bore**

SIZE DWG. NO.

C

PLOT SCALE 1, 3: 1

SHEET 1 OF 1

PROPRIETARY
THIS DOCUMENT CONTAINS CONFIDENTIAL, PROPRIETARY INFORMATION
THAT IS FOX PROPERTY. DO NOT DISCLOSE TO OR DUPLICATE
FOR OTHERS EXCEPT AS AUTHORIZED BY FOX.

4

3

2

ProE ASSEM